

Duwamish River Community Hub

Lease renewal

Authorization Request

Request Commission authorization for the Executive Director to approve lease extension for up to two years beyond current lease expiration date of June 30, 2024, and to allow staff to negotiate an option to purchase the Duwamish River Community Hub (DRCH) property.

Lease Terms and Extensions, Purchase Option

- Existing lease terminates July 1, 2024. It includes 2 (two) one-year options to extend terms.
- This authorization request is to activate these extensions for two additional 1-year terms (through July 2026).
- Staff is also working with owners to potentially purchase the HUB property.
- If our negotiations with the building owners are successful we would return to Commission for authorization to purchase and funds to purchase the property.



Duwamish Hub Supports Port in Community



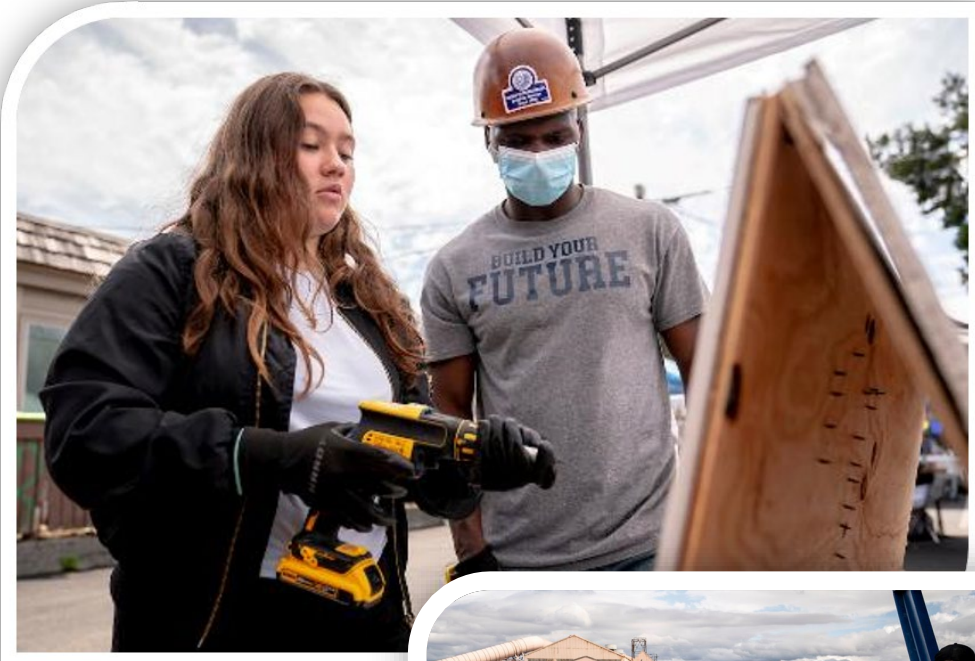
- Connects to Resolution 3767, the Duwamish Valley Community Equity Program and Community Benefits Commitment.
- Field office for Maritime Environment & Sustainability Team.
- Supports Port Community Action Team (PCAT) priorities and near-port community engagement.
- Versatile community meeting space, parking, and native species demo garden.

Hub Connects to Equitable Engagement

- Activated in partnership with PCAT.
- Harnesses the Port's economic development mission to promote community partnerships, healthy environments and communities, and economic prosperity.
- Fosters ongoing port collaboration and education in the Duwamish Valley as equitable, accountable, and environmentally responsible.



Hub Fosters Port-Community Collaboration



Hub supported activities:

- Duwamish River People's Park education and stewardship
- Construction Trades Job Fairs
- Habitat Restoration Training and Green Jobs Program
- Clean Air Initiatives
- Port 101 Workshops on Small Business Contracting
- PCAT meetings and community engagement
- Maritime High School and Workforce Development
- Port Parks Activation
- Lower Duwamish Waterway Clean Up
- Duwamish Valley Port-Community Connections

Hub activity since opening in 2021:

- 400+ events
- Served 62 organizations
- 1,500 hours of use